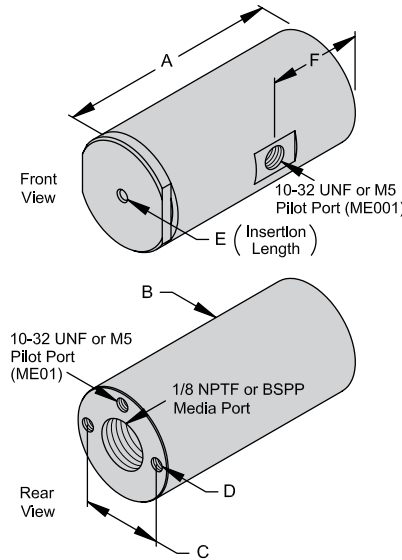




ME Series

For External Sealing of Catheters, Lumens, Luers and Other Cylindrical Parts

Part Number English	Part Number Metric	Sealing Range Inches (Metric)	Replacement Seal Kit *	Replacement Seals (5)	Internal Repair Kit
ME001-0050	ME001-0050M	0.030" to 0.050" (0.80 to 1.30 mm)	MES001-0050	MEB001-0500	MER001
ME001-001	ME001-001M	0.050" to 0.080" (1.30 to 2.00 mm)	MES001-001	MEB001-001	MER001
ME001-002	ME001-002M	0.080" to 0.130" (2.00 to 3.30 mm)	MES001-002	MEB001-002	MER001
ME01-01	ME01-01M	0.100" to 0.180" (2.50 to 4.60 mm)	MES01-01	MEB01-01	MER01
ME01-02	ME01-02M	0.180" to 0.260" (4.60 to 6.60 mm)	MES01-02	MEB01-02	MER01
ME01-03	ME01-03M	0.260" to 0.340" (6.60 to 8.60 mm)	MES01-03	MEB01-03	MER01
ME01-04	ME01-04M	0.340" to 0.420" (8.60 to 10.70 mm)	MES01-04	MEB01-04	MER01
ME01-05	ME01-05M	0.420" to 0.510" (10.70 to 13.00 mm)	MES01-05	MEB01-05	MER01



* Kit includes seal and metal parts for complete seal change.

- Test pressure ranges from vacuum to 500 psi (35 bar).
- ME001 connectors can be ordered to seal applications as small as 0.015" (35 mm) O.D. Consult factory for details.
- Above ME's available in optional stainless steel by adding SS to the suffix of the part number. Example: ME01-01SS
- Please contact **FasTest** for the connector used to seal outside diameters larger than 0.510"(13 mm).
- Please contact **FasTest** for sealing irregularly shaped diameters, such as ovals, rectangles or combinations.

Dimension Key

Part Number	A	B	C	D (English)	D (Metric)	E	F
ME001- . .	1.72	Ø 0.84	0.63	4-40UNC (2)	M2.5	0.16	0.72
ME01- . .	2.05	Ø 1.49	1.10	10-32UNF (2)	M5	0.58	NA



ML Series

For Securing and Sealing Luer Fittings

Part Number (English)	Part Number (Metric)	Sealing Range	Replacement Seals (5)	Internal Repair Kit
ML001- . . (Consult Factory)	ML001- . .M (Consult Factory)	Sized to Part	Sized to Part	MER001

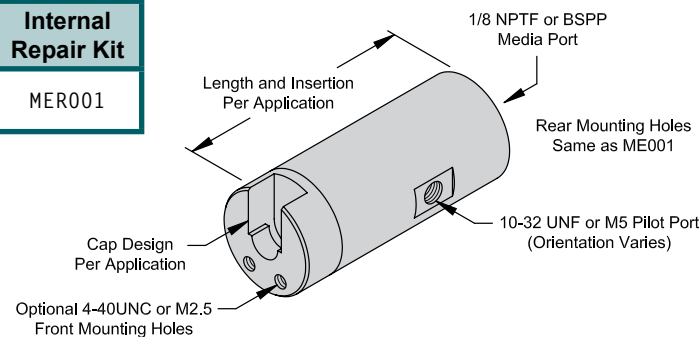
- Test pressure ranges from vacuum to 500 psi (35 bar).
- Available in Stainless Steel.
- Basic housing dimensions same as ME001 connector above.

How to Order:

The "ML" Medical Series connectors are designed to your specific application requirements.

To obtain a part number and price quotation:

1. Contact your local **FasTest** partner with details regarding your application. Test pressure, media and tolerance (detailed drawing preferred).
2. Provide two sample parts for design and testing purposes.



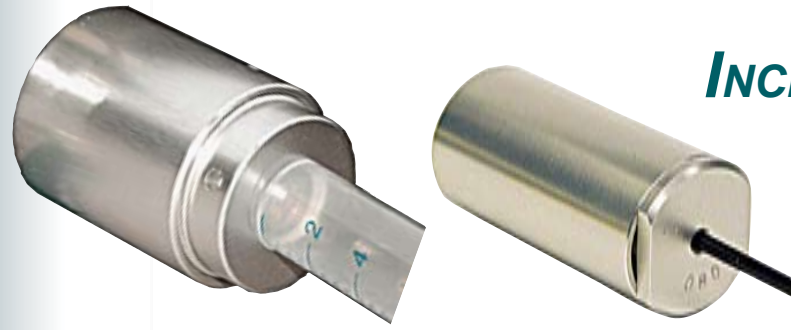
Connectors to Simplify Leak & Pressure Testing



Medical Products Series

ELIMINATE TESTING BOTTLENECKS

INCREASE PRODUCTION AND QUALITY WHILE REDUCING COSTS



ME Medical Series Connectors seal conventional and non-standard surfaces of tubes, luers, catheters and other smooth or threaded parts. Compressed air activates the elastomeric seal for testing to 500 psi. Uniform seal movement makes a leak-proof connection. Testing, filling or flushing, using air, gas or liquid, of the test piece is accomplished by introducing the media through the **FasTest** connector.

ML Medical Series Connectors are specifically designed to test many types of luers. **FasTest's** proprietary hold and seal design secures the luer while a special piston seals the internal portion of the luer. ML series connectors can be used manually or automated with sealing pressures to 500 psi. Actual pressure will vary based on the type of luer.



VALVES



LUMENS



CATHETERS



INFUSION BAGS



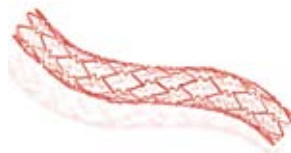
GAUGES



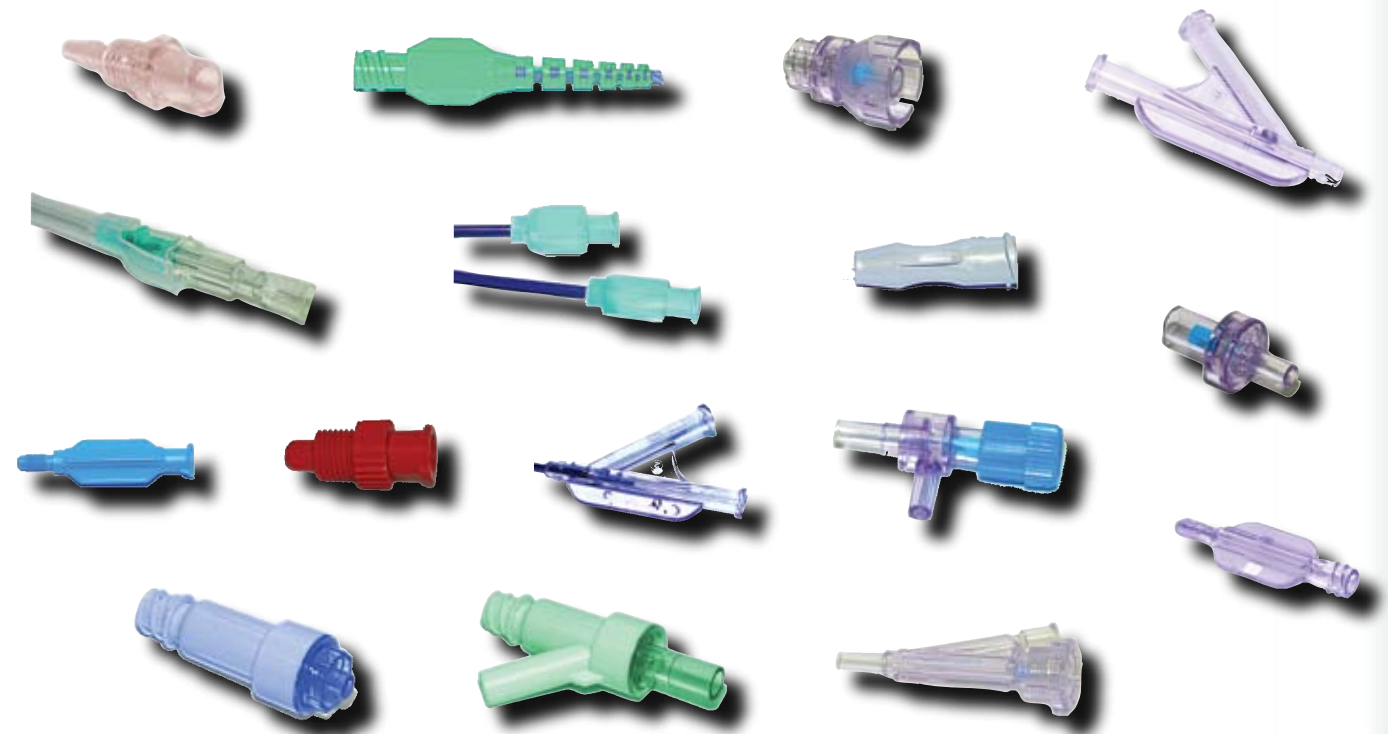
SYRINGES BOTTLES



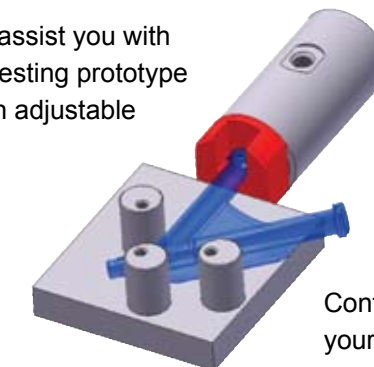
DIALYSIS



STENTS



FasTest can assist you with solutions for testing prototype parts using an adjustable platform.



Contact us to discuss your unique application.

FasTest®