

MODEL 4120 STAINLESS STEEL FORCE TRANSDUCERS

FEATURES

- Stainless Steel Construction
- Welded Diaphragm
- 5pt Tension & Compression Calibration
- Optional Hermetically Sealed Connector
- Optional Base
- Counterbored Mounting Holes on 10K Model
- Proprietary Modulus Compensated Strain Gages



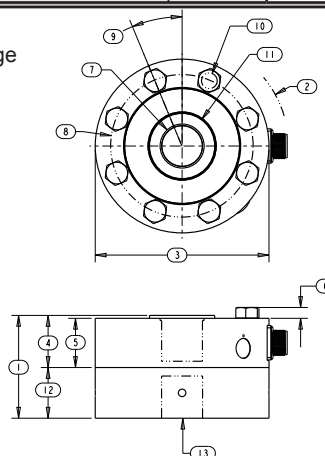
SPECIFICATIONS

Model	4120	4125
Capacity U.S. lbf.	10K	20K
PARAMETERS		
ACCURACY		
Static Error Band, % Rated Output	+/-0.100	+/-0.100
Nonlinearity, % Rated Output	+/-0.100	+/-0.100
Hysteresis, % Rated Output	+/-0.080	+/-0.080
Nonrepeatability, % Rated Output	+/-0.020	+/-0.020
Creep, % in 20 minutes	+/-0.030	+/-0.030
Zero Balance, % Rated Output	+/-2.0	+/-2.0
TEMPERATURE		
Range, Compensated, °F	+15 to +115	+15 to +115
Range, Compensated, °C	-10 to +45	-10 to +45
Range, Operating, °F	-65 to +200	-65 to +200
Range, Operating, °C	-55 to +90	-55 to +90
Effect on Sensitivity, % Rdg/ °F	+/-0.0008	+/-0.0008
Effect on Sensitivity, % Rdg/ °C	+/-0.0015	+/-0.0015
Effect on Zero, % Rated Output/ ° F	+/-0.0015	+/-0.0015
Effect on Zero, % Rated Output/ ° C	+/-0.0027	+/-0.0027
ELECTRICAL		
Rated Output, mV/V, Nominal	3	3
Excitation Voltage, VDC Recommended/Max	10/20	10/20
Input Resistance, Ohms	350	350
Output Resistance, Ohms	350	350
Insulation Resistance, Megohm	5000	5000
Connector	MS3102E14S-6	
MECHANICAL		
Safe Overload Range, % Rated Capacity	+/-150	+/-150
Weight lb	6	9
Weight kg	3	4
Flexure Material	Stainless Steel	

DIMENSIONS

Model	4120	4125
Capacity	10K	20K
Dimensions		
1.	inch	inch
2.	3.55	3.55
3.	R 3.39	R 3.62
4.	5.50	6.00
5.	1.80	1.80
6.	1.70	1.70
7.	N/A	.38
8.	1 -14 UNS 3B	1 1/2 -12 UNF 3B
9.	4.50	4.88
10.	22.5°	22.5°
11.	C Bore for 3/8-24 8 Places	.53 8 Places
12.	1.73	2.25
13.	1.75	1.75
	1 -14 1.65 Deep	1 1/2 -12 1.65 Deep

Note: 20K drawing shown. 10K package has counterbored mounting holes.



OPTIONS

Hermetically sealed connector
Custom Connectors
Base
Output Adjusted to Standard

ACCESSORIES

Mating connector
Loading fixtures
Interconnect cable
Shunt calibration resistor
Instrumentation