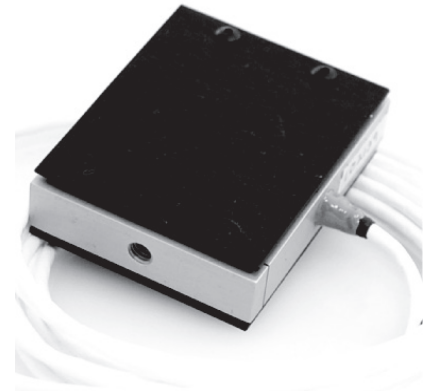


SCT SERIES PRECISION OVERLOAD PROTECTED S-TYPE LOAD CELLS

FEATURES

- Overload Protected to 1000% of FS in both Tension and Compression
- High Accuracy-.02% of R.O.
- Integral Cable
- 5pt Tension & Compression Calibration
- Proprietary Modulus Compensated Strain Gages



SPECIFICATIONS

Model	SCT	
Capacity	U.S. lbf.	2.2 - 225
PARAMETERS	Metric N	10 - 1000 N
ACCURACY		
Static Error Band, % Rated Output		+/-0.030
Nonlinearity, % Rated Output		+/-0.040
Hysteresis, % Rated Output		+/-0.030
Nonrepeatability, % Rated Output		+/-0.010
Creep, % in 20 minutes		+/-0.025
Zero Balance, % Rated Output		+/-1.0
TEMPERATURE		
Range, Compensated, °F		0 to +125
Range, Compensated, °C		-15 to +50
Range, Operating, °F		-10 to +175
Range, Operating, °C		-25 to +80
Effect on Sensitivity, % Rdg/ °F		+/-0.0010
Effect on Sensitivity, % Rdg/ °C		+/-0.0018
Effect on Zero, % Rated Output/ °F		+/-0.0015
Effect on Zero, % Rated Output/ °C		+/-0.0027
ELECTRICAL		
Rated Output, mV/V, Nominal		2
Excitation Voltage, VDC Maximum		15
Input Resistance, Ohms		350
Output Resistance, Ohms		350
Insulation Resistance, Megohm		5000
MECHANICAL		
Safe Overload Range, % Rated Capacity		+/-1000
Weight lb		0.3
Flexure Material		Aluminum

DIMENSIONS

Model	SCT			
Capacity	2.2, 4.4, 11, 22, 55 lbf	10, 20, 50, 100, 250 N	110, 225 lbf	500, 1000 N
Dimensions	inch	mm	inch	mm
1.	2.00	50.8	2.25	57.1
2.	.50	12.7	1.00	25.4
3.	.85	21.6	1.35	34.3
4.	2.50	63.5	3.0	76.2
5.	1/4 - 28 .37 Deep	M6 X 1 9.4 Deep	1/2 - 20 .54 Deep	M12 X 1.75 13.7 Deep

