

Features

- Maintains a stable temperature environment for ZOC pressure sensors
- For use with ZOC17, 22, and 33
- Quick disconnects for electrical and pneumatic I/O
- Rugged stainless steel case



*ZOC22/32Tx
Thermal Control Unit*

General Description

The ZOC (Zero, Operate and Calibrate) line of Thermal Control Units is designed to provide a constant temperature environment for ZOC17, ZOC22B, and ZOC33 electronic pressure scanners. These pressure scanners incorporate piezoresistive pressure sensors. The ZOCTCU minimizes the need to frequently recalibrate ZOC electronic pressure scanners exposed to varying ambient temperatures. All ZOCTCU's include a rugged stainless steel enclosure, insulation, electrical and pneumatic connectors, and a proportionally controlled heating element.

The ZOCTCU proportional heater circuit has a user adjustable set point that is stable within $\pm 0.2^{\circ}\text{C}$ of set point. The thermal rejection rate of the ZOCTCU is 15 to 1 within its operating range. The sensors will see a 1°C temperature increase for every 15°C of ambient temperature change.

The ZOCTCU not only provides a controlled temperature environment, but also an easy method of breaking connections. The electrical connector is a heavy duty mil-spec bayonet connector. The pneumatic connector is a Scanivalve quick disconnect. These features make for easy use and changeout of ZOC pressure scanners.

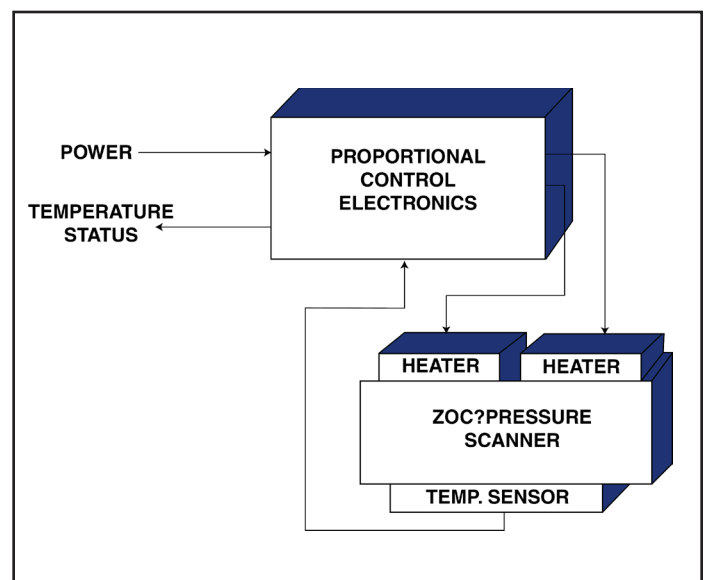
The ZOCTCU is typically purchased at the same time the ZOC electronic pressure scanners are purchased. Scanivalve can then assemble and test the two as one unit.

Application

Thermal Control Units are most commonly utilized in flight test, wind tunnel, and engine test applications where temperatures tend to vary.

They may be used anywhere a stable temperature environment is not available for ZOC pressure scanner installation or anytime ambient temperatures will be below 0°C . This will prevent moisture from freezing inside the ZOC calibration valving.

TCU Functional Diagram



Specifications

Mechanical Capacity: ZOC22/32Px or 32PxX2
 ZOC17/16Px or 2 ea. 8Px
 Muxless
 ZOC33/64Px or 64PxX2

Case Material: 303 stainless steel

Operating Temperature Range: -45 to +65°C*

Oven Stability: ±0.2°C of set point
 (Constant Environment)

Pneumatic I/O: 24, 48, 64, or 73 port connector,
 .063 inch diameter bulged
 tubulations

Electrical I/O: MS3100A type, size 20

Heater Rating: 16Px – 24 watts
 32Px – 24 watts
 64Px – 24 watts

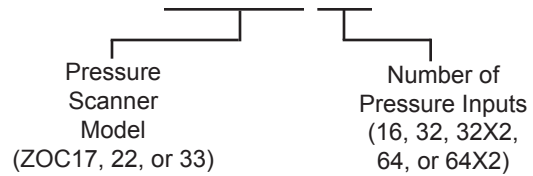
Power Required: 16Px: 24Vdc @ 1.0 amp max.
 32Px: 24Vdc @ 1.0 amp max.
 64Px: 24Vdc @ 1.0 amp max.

Temperature Sense: 4 wire RTD

Mounting Position: Any

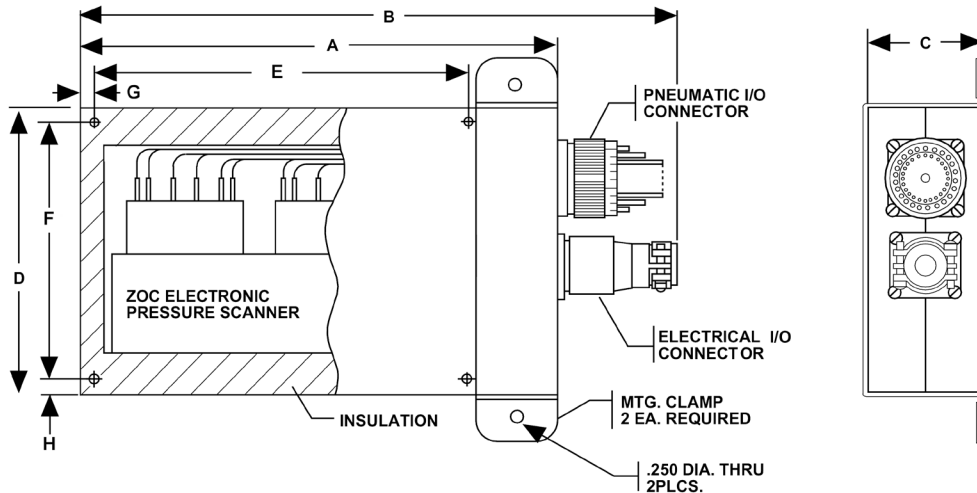
Weight:
 (Including ZOC Scanner)
 ZOC22TCU 1.8 lbs. (.82 kgm)
 ZOC 17TCU/16Px 6.3 lbs. (2.86 kgm)
 ZOC33TCU/64Px 3.8 lbs. (1.73 kgm)
 ZOC33TCU/64Px X2 4.0 lbs. (1.81 kgm)

Ordering Information



*Scanivalve manufactures a ZOCEB Environmental Box for operating temperature ranges up to 176°C. Consult factory for more information.

Dimensions Inches (mm)



ZOC Scanner to be used in ZOCTCU	A	B	C	D	E	F	G	H	Mating Connector	Mounting Method
ZOC22/32Px or ZOC22/32PxX2	7.0 (177.8)	9.0 (228.6)	1.5 (38.1)	3.0 (76.2)	N/A	N/A	N/A	N/A	6550-2	17053-1 strap
ZOC17/16Px	9.0 (228.6)	11.0 (279.4)	3.0 (76.2)	6.1 (154.9)	10.4 (264.2)	5.0 (127.0)	0.3 (7.6)	0.55 (14.0)	6530-1	19193-1 strap
ZOC33/64Px	7.3 (185.4)	9.65 (245.1)	2.4 (60.9)	4.2 (106.7)	6.7 (170.2)	3.44 (87.4)	0.3 (7.6)	0.38 (9.7)	6570-2 (1ea.)	Threaded elastic stop nuts
ZOC33/64PxX2	7.3 (185.4)	9.65 (245.1)	2.4 (60.9)	4.2 (106.7)	6.7 (170.2)	3.44 (87.4)	0.3 (7.6)	0.38 (9.7)	6570-2 (2 ea.)	Threaded elastic stop nuts



本社: 茨城県つくば市千現2-9-1
 Tel: 029-855-8778 Fax: 029-855-8700
 関西営業所: 兵庫県明石市松の内2-1-8 6F
 Tel: 078-926-1178 Fax: 078-926-1180
<http://www.ohtegiken.co.jp/> main.sales@ohtegiken.co.jp

Scanivalve Headquarters
 1722 N. Madson Street
 Liberty Lake, WA 99019
 Tel: 509-891-9970
 800-935-5151
 Fax: 509-891-9481
 e-mail: scanco@scanivalve.com

Scanivalve
www.scanivalve.com