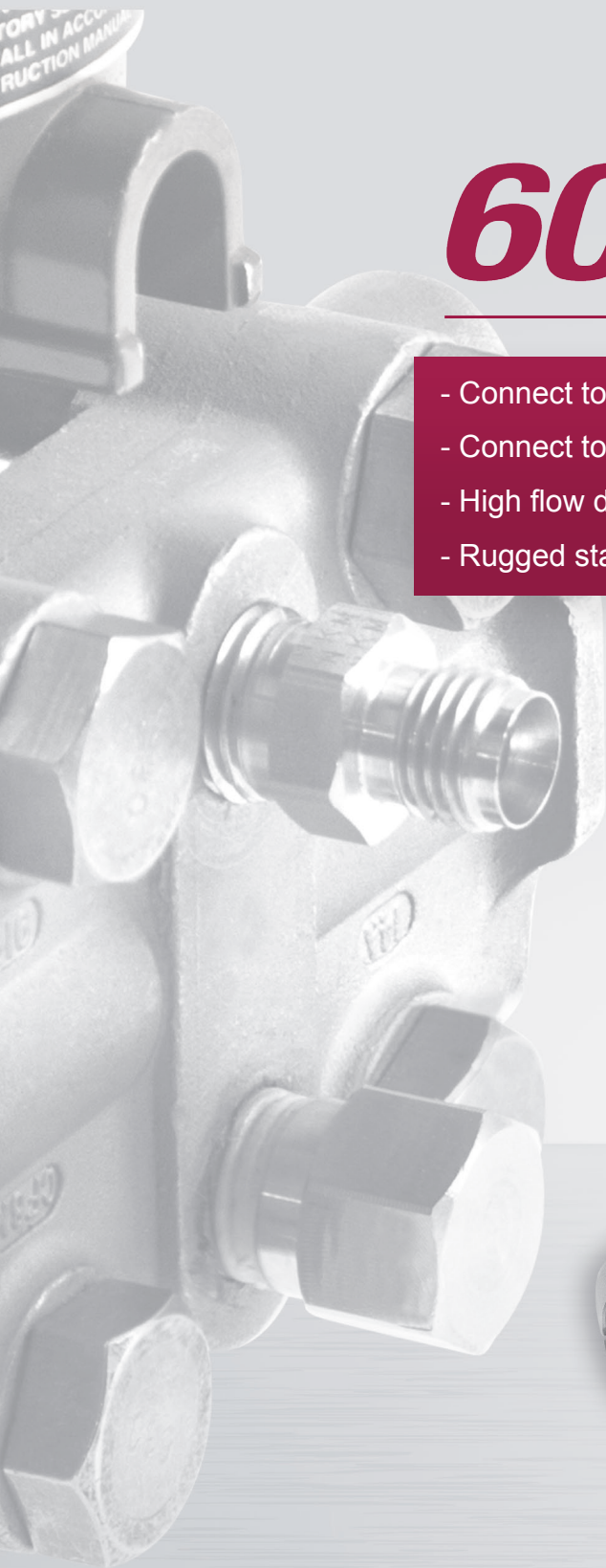


60 & 70[™] **Series**

- Connect to expanded, flare, barbed, beaded, and form end tubes
- Connect to compression fittings, NPT, SAE 37° "AN" and 45° flare male threads
- High flow design for short filling and testing times
- Rugged stainless steel housing



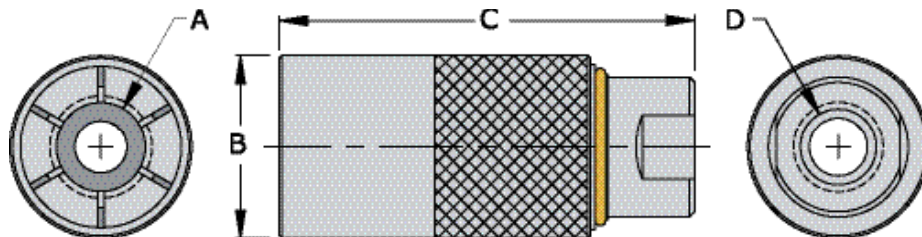
60 and 70 Series Connectors

FasTest sleeve actuated 60 and 70 Series connectors are the preferred method for fast, safe and repeatable connections to a wide variety of thread and tube profiles used in the process and manufacturing industries for filling, pressure and leak testing, and instrument calibration.

Made in the USA
www.fastestinc.com

60 and 70 Series Connectors

Dimensional Drawing for 60 / 70 Series Connectors



60 Series for NPT Pipe Threads

Part Number	Connects to Dim "A"	Diameter Dim "B"	Length Dim "C"	Term. Thread Dim "D"	Rating PSI	Housing Material	Seal Material	Main Seals Package (5)
60G-1T02	1/8" NPT	0.99"	2.95"	1/8" NPT	750	Stainless Steel	Buna N	S1105-B70
60G-1T04	1/4" NPT	1.19"	2.95"	1/4" NPT				S1109-B70
60G-1T04021	1/4" NPT	1.19"	2.95"	1/8" NPT				S1109-B70
60G-1T06	3/8" NPT	1.38"	3.15"	3/8" NPT				S1111-B70
60G-1T08	1/2" NPT	1.38"	3.15"	1/2" NPT				S1112-B70
60G-1T08021	1/2" NPT	1.38"	3.15"	1/8" NPT				S1112-B70

60 Series for SAE 45° Flare

Part Number	Connects to Dim "A"	Diameter Dim "B"	Length Dim "C"	Term. Thread Dim "D"	Rating PSI	Housing Material	Seal Material	Main Seals Package (5)
60G-A04	-4 (7/16-20)	0.99"	2.95"	1/8" NPT	750	Stainless Steel	Buna N	S2060-0246-B70
60G-A06	-6 (5/8-18)	1.38"	3.15"	3/8" NPT				S1012-B70
60G-A08	-8 (3/4-16)	1.38"	3.15"	3/8" NPT				S1014-B70
60G-A10	-10 (7/8-14)	1.78"	3.54"	3/4" NPT				S1015-B70
60G-A12	-12 (1 1/16-14)	1.78"	3.54"	3/4" NPT				S1117-B70

60 Series for SAE 37° Flare - "AN" Type

Part Number	Connects to Dim "A"	Diameter Dim "B"	Length Dim "C"	Term. Thread Dim "D"	Rating PSI	Housing Material	Seal Material	Main Seals Package (5)
60G-049	-4 (7/16-20)	0.99"	2.95"	1/8" NPT	750	Stainless Steel	Buna N	S1010-B70
60G-069	-6 (9/16-18)	1.19"	2.95"	3/8" NPT				S1012-B70
60G-089	-8 (3/4-16)	1.58"	3.15"	3/8" NPT				S1014-B70

60 Series for Double Ferrule Compression Style Fittings

Part Number	Connects to Dim "A"	Diameter Dim "B"	Length Dim "C"	Term. Thread Dim "D"	Rating PSI	Housing Material	Seal Material	Main Seals Package (5)
60G-CF04	-4 (7/16-20)	1.19"	2.95"	1/8" NPT	750	Stainless Steel	Buna N	S1008-B70

Note: Additional sizes and seal options available for all 60 Series connectors. Consult factory for details.

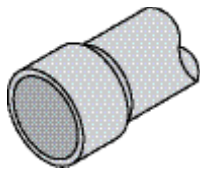
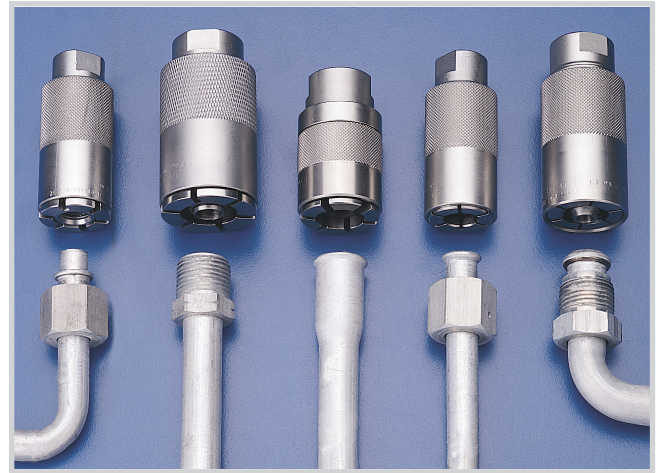
70 Series Connectors

How to Order

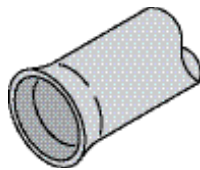
The 70 Series connectors are designed for mechanical gripping on a feature of the test piece and pressure enhanced sealing. Connectors are designed, engineered and manufactured to your specific application requirements.

For part number and a price quotation:

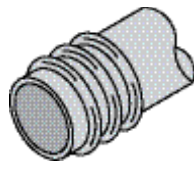
- 1) Identify the gripping and sealing areas of your test piece.
- 2) Contact FasTest with information on test pressure, test media and provide a detailed drawing, including tolerances, of your test piece.
- 3) Two sample parts will be required at the time of order for final design and testing purposes.



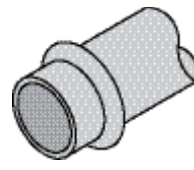
Expanded Tube



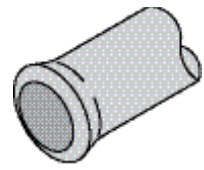
Flared Tube



Barbed Tube



Beaded Tube



Form End Tube

70 Series for Expanded, Flared, Barbed, Beaded and Form End Tubes

Body Size	Range (OD) Dim "A"	Diameter Dim "B"	Length Dim "C"	Term. Thread Dim "D"	Rating PSI	Housing Material	Seal Material	Main Seals Package (5)
1	Up to 0.32"	0.87"	2.95"	1/8" NPT	750	Stainless Steel	Determined by application	Determined by application
2	0.32" to 0.43"	0.99"	2.95"	1/8" NPT				
3	0.43" to 0.59"	1.19"	2.95"	1/4" NPT				
4	0.59" to 0.79"	1.38"	3.15"	3/8" NPT				
5	0.79" to 0.98"	1.58"	3.15"	1/2" NPT				
6	0.98" to 1.18"	1.78"	3.54"	3/4" NPT				
7	1.18" to 1.42"	1.97"	3.54"	3/4" NPT				
8	1.42" to 1.65"	2.17"	3.54"	3/4" NPT				
9	1.65" to 1.85"	2.36"	3.54"	1" NPT				
10	1.85" to 2.04"	2.76"	3.54"	1 1/4" NPT				

Note: Additional seal options available for all 70 Series connectors. Consult factory for details.

For more information, please visit www.fastestinc.com

Where to Buy



Purchase through local distributor

► Factory authorized distributors provide local service and support across the U.S.A. and internationally.

► Contact your local distributor or visit:
www.fastestinc.com/en/distributorlocator

Cost, Process and Quality Improvement

Since 1985, **FasTest, Inc.** has manufactured quick test connectors and valves that maximize efficiency, productivity and profitability for the Industrial Manufacturing, HVAC-R and Compressed Gas Industries.

Relying on our core engineering skills, FasTest has secured over 50 US and International patents. These patents serve as the design platform for innovative products that enable our customers to improve testing, manufacturing processes and productivity.

Proudly Serving



FasTest®

Headquarters in USA

1646 Terrace Drive • Roseville, MN 55113-1317

Phone: +1.651.645.6266

Fax: +1.651.645.7390

www.fastestinc.com

Asia Office in Hong Kong

+852.2886.1650 • asia@fastestinc.com

Proudly Manufactured in the U.S.A.

Notifications and Copyright

Specifications in this brochure are subject to change without notice. FasTest also reserves the right to make modifications and makes no guarantee of the accuracy of the information contained herein.

FasTest is a registered trademark with the US Patent & Trademark Office.

© 2015 FasTest Inc. All rights reserved.

No part of this publication may be reproduced without written permission.

Patents

FasTest Inc. takes pride in its innovative quick disconnect coupling solutions, many of which have been awarded United States and International patents. FasTest Inc. has a strong tradition of leadership in the quick disconnect market, and aggressively pursues and protects its proprietary information and intellectual property.

All products are designed and manufactured by Fastest Inc. USA

Limited Express Warranty

FasTest Inc. warrants its products against defects in workmanship and materials for 12 months from the date of sale by FasTest Inc. or its authorized distributor. This warranty is void if the product is misused, tampered with or used in a manner that is contrary to FasTest Inc.'s written recommendations and/or instructions.

See website for complete warranty information.

Custom Applications

FasTest has full engineering and manufacturing capability to provide special accommodations to meet specific applications. Our engineers are available to review your unique application requirements.

Certifications

FasTest Inc. is ISO 9001: 2008 certified.