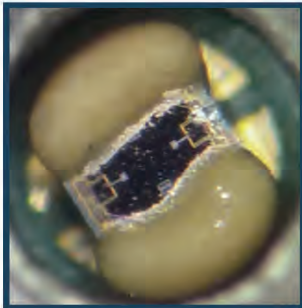


## Ultra small pressure sensor for harsh environment Standard Temperature

1,2 mm up to 100C°

MP-1.20-WOT-YYY-A-ST



### MODEL DEFINITION

WOT: without tube  
is the standard product

YYY: pressure range in bar  
(002, 004, 010)

A: absolute pressure  
measurement

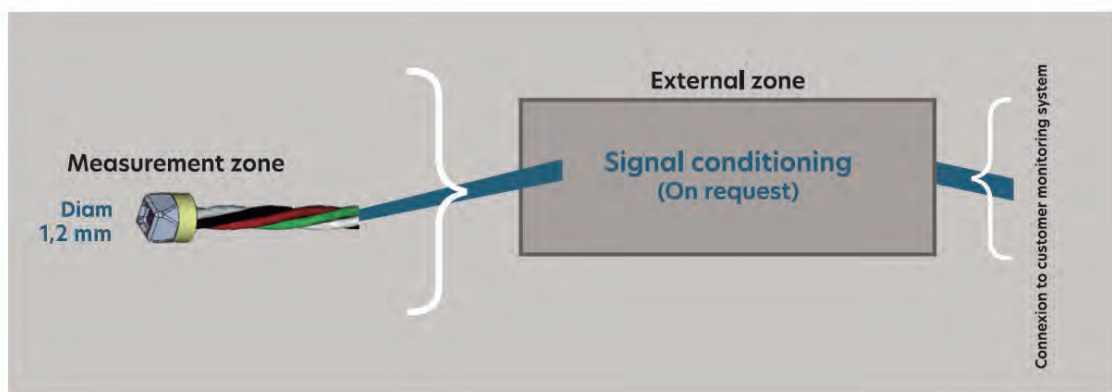
ST: standard temperature  
up to 100C°

### OVERVIEW

- Outer diameter 1,2 mm
- From 2 to 10 Bar Absolute pressure sensor
- Burst pressure 10 bar
- Wide temperature range up to 100C°
- Harsh environment
- Customized solution possible
- mVolt output

### APPLICATIONS

- Instrumentation (ie: Automotive, ...)
- Aerodynamic testing (ie: wind tunnel)
- Industrial process monitoring
- Pumps
- Biomedical
- Oil and gas
- ...



## PART NUMBER

MP-1.20-WOT-YYY-A-ST

Outer diameter	1,2mm
Pressure range <sup>1</sup>	0-2 bar 0-4 bar 0-10 bar 0-30 psi 0-60 psi 0-100 psi
Max nominal pressure	2 bar 4 bar 10 bar 30 psi 60 psi 100 psi
Proof pressure <sup>1</sup>	3 * nominal
Burst pressure <sup>1</sup>	5 * nominal
Bridge resistance	6,2 kΩ typical / (5-7 kΩ)
Vout span	100 mV typical / (65-135mV)
Tmax <sup>2</sup>	100 Celsius
Accuracy <sup>3</sup>	0,25% @ FS
Signal amplification	None
Fluid	Dry air or inert gas

### Remark:

- All sensors are provided with a control sheet given pressure level versus mVolt @ 25C° under a supply voltage of 5 Volt.
- Accuracy of passive compensation 2%FS (passive compensation has to remain @ 25C°) (in option)
- Active compensation (nonstandard request - Highest accuracy but lowest acquisition frequency)

1 | Absolute pressure

2 | TMCL qualification tests - JEDEC JESD22-A104  
« temperature cycling » @ Tmax

3 | Accuracy @25 Celsius

## CONTACT

**Operational Headquarter:** The Labs, Liège Science, Park Rue Bois Saint-Jean 15/1, B-4102 Seraing, BELGIUM

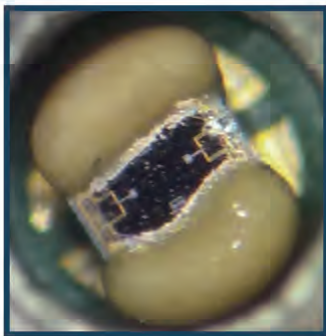
**TEL:** +32 4 353 30 14

**Email:** sales@sensorade.be

## Ultra small pressure sensor for harsh environment High Temperature

1,2 mm up to 185C°

MP-1.20-WOT-YYY-A-HT



### MODEL DEFINITION

WOT: without tube is the standard product

YYY: pressure range in bar (002, 004, 010)

A: absolute pressure measurement

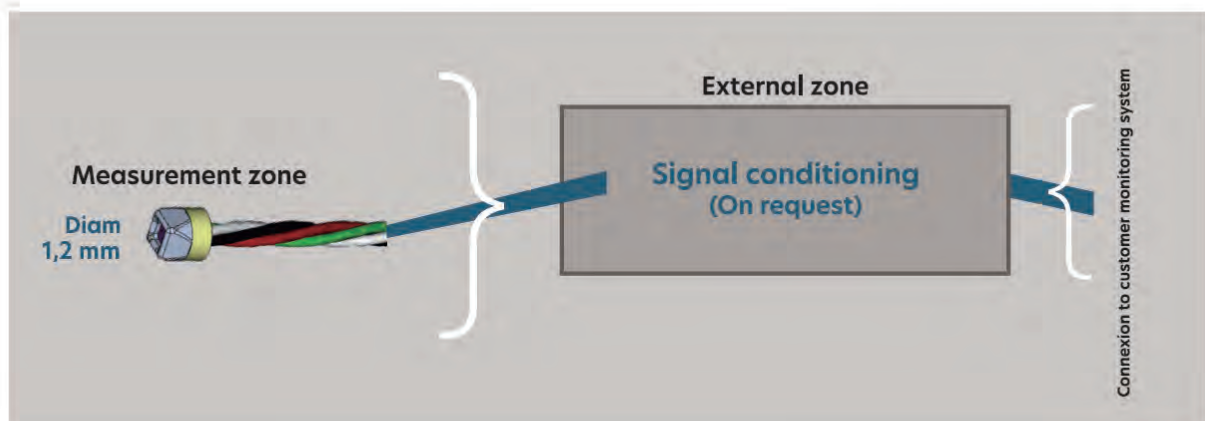
HT: high temperature up to 185C°

### OVERVIEW

- Outer diameter 1,2 mm
- From 2 to 10 Bar Absolute pressure sensor
- Burst pressure 10 bar
- Wide temperature range up to 185C°
- Harsh environment
- Customized solution possible
- mVolt output

### APPLICATIONS

- Instrumentation (ie: Automotive, ...)
- Aerodynamic testing (ie: wind tunnel)
- Industrial process monitoring
- Pumps
- Biomedical
- Oil and gas
- ...



## PART NUMBER

MP-1.20-WOT-YYY-A-HT

Outer diameter	1,2mm
Pressure range <sup>1</sup>	0-2 bar 0-4 bar 0-10 bar 0-30 psi 0-60 psi 0-100 psi
Max nominal pressure	2 bar 4 bar 10 bar 30 psi 60 psi 100 psi
Proof pressure <sup>1</sup>	3 * nominal
Burst pressure <sup>1</sup>	5 * nominal
Bridge resistance	6,2 kΩ typical / (5-7 kΩ)
Vout span	100 mV typical / (65-135mV)
Tmax <sup>2</sup>	185 Celsius
Accuracy <sup>3</sup>	0,25% @ FS
Signal amplification	None
Fluid	Dry air or inert gas

### Remark:

- All sensors are provided with a control sheet given pressure level versus mVolt @ 25C° under a supply voltage of 5 Volt.
- Accuracy of passive compensation 2%FS (passive compensation has to remain @ 25C°) (in option)
- Active compensation (nonstandard request - Highest accuracy but lowest acquisition frequency)

**1** | Absolute pressure

**2** | TMCL qualification tests - JEDEC JESD22-A104  
« temperature cycling » @ Tmax

**3** | Accuracy @25 Celsius

## CONTACT

**Operational Headquarter:** The Labs, Liège Science Park, Rue Bois Saint-Jean 15/1, B-4102 Seraing, BELGIUM

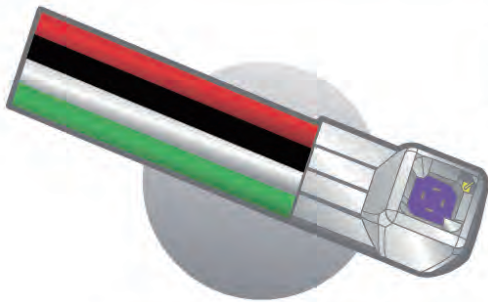
**TEL:** +32 4 353 30 14

**Email:** sales@sensorade.be

## Ultra small pressure sensor for harsh environment Standard Temperature - Flat

1,25 MM UP TO 100C°

MP-1.25-WOT-YYY-A-ST-FLAT



### MODEL DEFINITION

WOT: without tube  
is the standard product

YYY: pressure range in bar  
(002, 004, 010)

A: absolute pressure  
measurement

ST: standard temperature  
up to 100C°

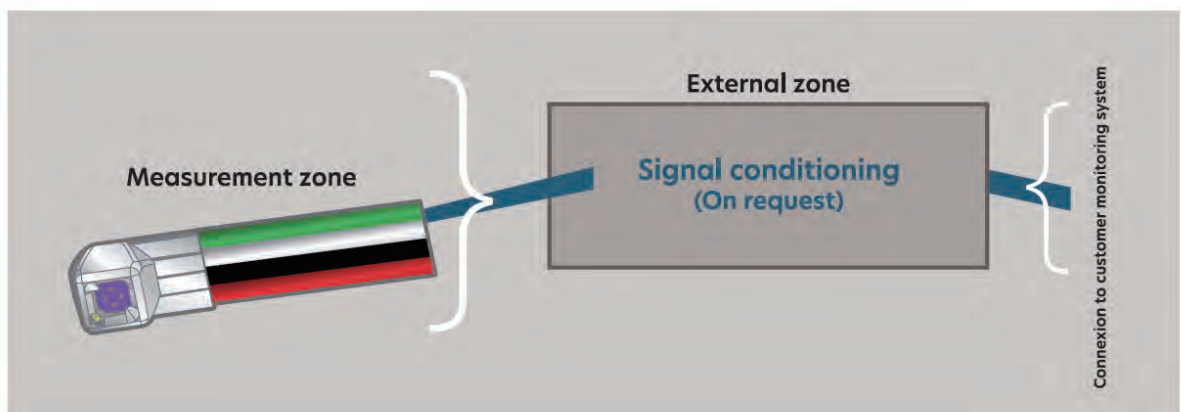
FLAT: flat shape

### OVERVIEW

- L x W 2.45mm x 1.25mm
- From 2 to 10 Bar Absolute pressure sensor
- Burst pressure 10 bar
- Wide temperature range up to 100C°
- Harsh environment
- Customized solution possible
- mVolt output

### APPLICATIONS

- Instrumentation (ie: Automotive, ...)
- Aerodynamic testing (ie: wind tunnel)
- Industrial process monitoring
- Pumps
- Biomedical
- Oil and gas
- ...



## PART NUMBER

MP-1.25-WOT-YYY-A-ST-FLAT

L x W	2.45 mm x 1.25 mm
Pressure range <sup>1</sup>	0-2 bar 0-4 bar 0-10 bar 0-30 psi 0-60 psi 0-100 psi
Max nominal pressure	2 bar 4 bar 10 bar 30 psi 60 psi 100 psi
Proof pressure <sup>1</sup>	3 * nominal
Burst pressure <sup>1</sup>	5 * nominal
Bridge resistance	6,2 kΩ typical / (5-7 kΩ)
Vout span	100 mV typical / (65-135mV)
Tmax <sup>2</sup>	100 Celsius
Accuracy <sup>3</sup>	0,25% @ FS
Signal amplification	None
Fluid	Dry air or inert gas

### Remark:

- All sensors are provided with a control sheet given pressure level versus mVolt @ 25C° under a supply voltage of 5 Volt.
- Accuracy of passive compensation 2%FS (passive compensation has to remain @ 25C°) (in option)
- Active compensation (nonstandard request - Highest accuracy but lowest acquisition frequency)

**1** | Absolute pressure

**2** | TMCL qualification tests - JEDEC JESD22-A104  
« temperature cycling » @ Tmax

**3** | Accuracy @ 25 Celsius

## CONTACT

**Operational Headquarter:** The Labs, Liège Science, Park Rue Bois Saint-Jean 15/1, B-4102 Seraing, BELGIUM

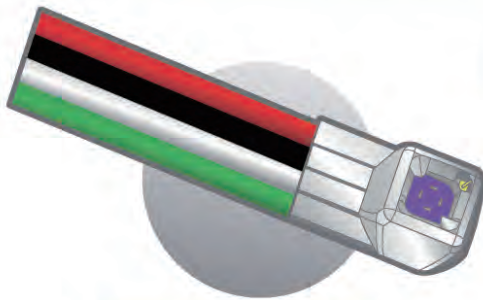
**TEL:** +32 4 353 30 14

**Email:** sales@sensorade.be

## Ultra small pressure sensor for harsh environment High Temperature - Flat

1,25 mm up to 185C°

MP-1.25-WOT-YYY-A-HT-FLAT



### MODEL DEFINITION

WOT: without tube  
is the standard product

YYY: pressure range in bar  
(002, 004, 010)

A: absolute pressure  
measurement

HT: high temperature  
up to 185C°

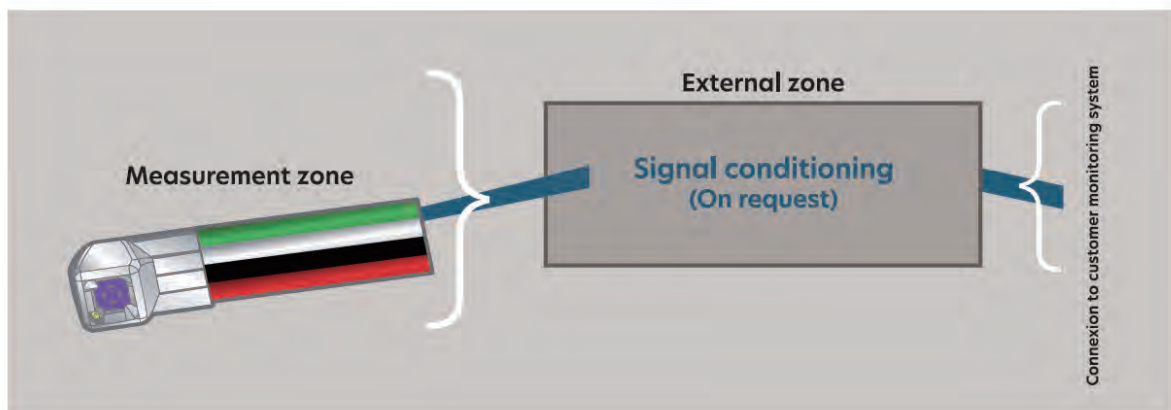
FLAT: flat shape

### OVERVIEW

- L x W 2.45mm x 1.25mm
- From 2 to 10 Bar Absolute pressure sensor
- Burst pressure 10 bar
- Wide temperature range up to 185C°
- Harsh environment
- Customized solution possible
- mVolt output

### APPLICATIONS

- Instrumentation (ie: Automotive, ...)
- Aerodynamic testing (ie: wind tunnel)
- Industrial process monitoring
- Pumps
- Biomedical
- Oil and gas
- ...



## PART NUMBER

MP-1.25-WOT-YYY-A-HT-FLAT

L x W	2.45 mm x 1.25 mm
Pressure range <sup>1</sup>	0-2 bar 0-4 bar 0-10 bar 0-30 psi 0-60 psi 0-100 psi
Max nominal pressure	2 bar 4 bar 10 bar 30 psi 60 psi 100 psi
Proof pressure <sup>1</sup>	3 * nominal
Burst pressure <sup>1</sup>	5 * nominal
Bridge resistance	6,2 kΩ typical / (5-7 kΩ)
Vout span	100 mV typical / (65-135mV)
Tmax <sup>2</sup>	185 Celsius
Accuracy <sup>3</sup>	0,25% @ FS
Signal amplification	None
Fluid	Dry air or inert gas

### Remark:

- All sensors are provided with a control sheet given pressure level versus mVolt @ 25C° under a supply voltage of 5 Volt.
- Accuracy of passive compensation 2%FS (passive compensation has to remain @ 25C°) (in option)
- Active compensation (nonstandard request - Highest accuracy but lowest acquisition frequency)

**1** | Absolute pressure

**2** | TMCL qualification tests - JEDEC JESD22-A104  
« temperature cycling » @ Tmax

**3** | Accuracy @ 25 Celsius

## CONTACT

**Operational Headquarter:** The Labs, Liège Science, Park Rue Bois Saint-Jean 15/1, B-4102 Seraing, BELGIUM

**TEL:** +32 4 353 30 14

**Email:** sales@sensorade.be



## Very small pressure sensor for harsh environment Standard Temperature

1,5 mm up to 100C°

MP-1.50-TIG-YYY-A-ST



### MODEL DEFINITION

**TIG:** Inconel tube with grid is the standard product

**YYY:** pressure range in bar (002, 004, 010)

**A:** absolute pressure measurement

**ST:** standard temperature up to 100C°

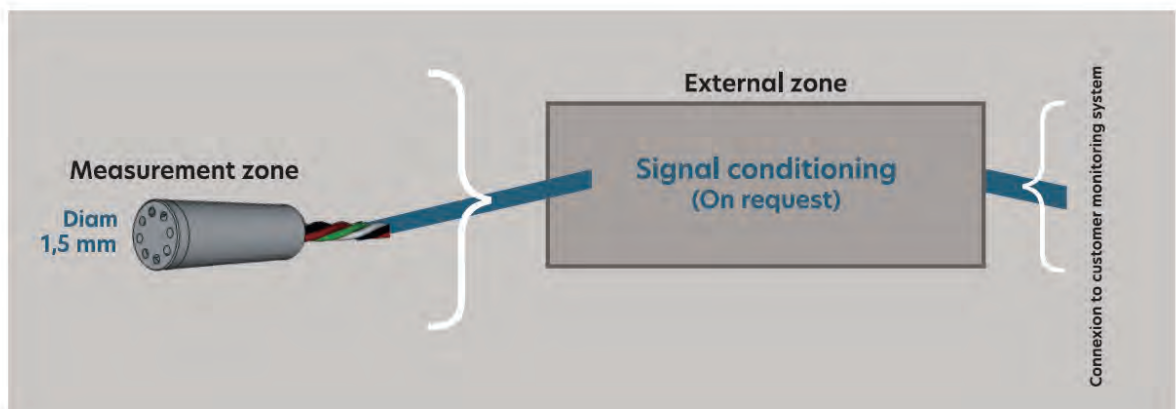
**Options:** special tube length, material and grid shape also available on request

### OVERVIEW

- Outer diameter 1,5 mm
- From 2 to 10 Bar Absolute pressure sensor
- Burst pressure 10 bar
- Wide temperature range up to 100C°
- Harsh environment
- Customized solution possible
- mVolt output

### APPLICATIONS

- Instrumentation (ie: Automotive, ...)
- Aerodynamic testing (ie: wind tunnel)
- Industrial process monitoring
- Pumps
- Biomedical
- Oil and gas
- ...



## PART NUMBER

MP-1.50-TIG-YYY-A-ST

Outer diameter	1.5mm
Pressure range <sup>1</sup>	0-2 bar 0-4 bar 0-10 bar 0-30 psi 0-60 psi 0-100 psi
Max nominal pressure	2 bar 4 bar 10 bar 30 psi 60 psi 100 psi
Proof pressure <sup>1</sup>	3 * nominal
Burst pressure <sup>1</sup>	5 * nominal
Bridge resistance	6,2 kΩ typical / (5-7 kΩ)
Vout span	100 mV typical / (65-135mV)
Tmax <sup>2</sup>	100 Celsius
Accuracy <sup>3</sup>	0,25% @ FS
Signal amplification	None
Fluid	Dry air or inert gas

### Remark:

- All sensors are provided with a control sheet given pressure level versus mVolt @ 25C° under a supply voltage of 5 Volt.
- Accuracy of passive compensation 2%FS (passive compensation has to remain @ 25C°) (in option)
- Active compensation (nonstandard request - Highest accuracy but lowest acquisition frequency)

- 1 | Absolute pressure
- 2 | TMCL qualification tests - JEDEC JESD22-A104  
« temperature cycling » @ Tmax
- 3 | Accuracy @25 Celsius

## CONTACT

**Operational Headquarter:** The Labs, Liège Science Park, Rue Bois Saint-Jean 15/1, B-4102 Seraing, BELGIUM

**TEL:** +32 4 353 30 14

**Email:** sales@sensorade.be

## Very small pressure sensor for harsh environment High Temperature

1,5 mm up to 185C°

MP-1.50-TIG-YYY-A-HT



### MODEL DEFINITION

**TIG:** Inconel tube with grid is the standard product

**YYY:** pressure range in bar (002, 004, 010)

**A:** absolute pressure measurement

**HT:** high temperature up to 185C°

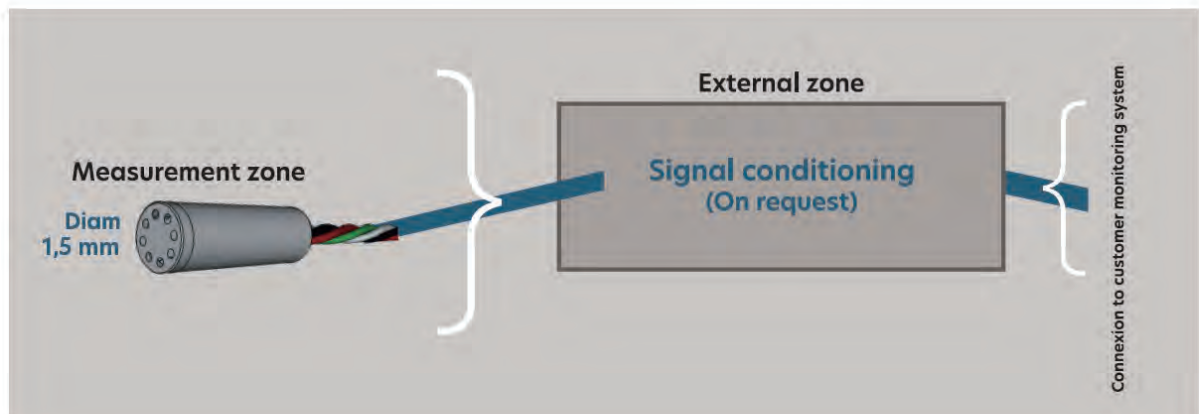
**Options:** special tube length, material and grid shape also available on request

### OVERVIEW

- Outer diameter 1,5 mm
- From 2 to 10 Bar Absolute pressure sensor
- Burst pressure 10 bar
- Wide temperature range up to 185C°
- Harsh environment
- Customized solution possible
- mVolt output

### APPLICATIONS

- Instrumentation (ie: Automotive, ...)
- Aerodynamic testing (ie: wind tunnel)
- Industrial process monitoring
- Pumps
- Biomedical
- Oil and gas
- ...



## PART NUMBER

MP-1.50-TIG-YYY-A-HT

Outer diameter	1.5mm
Pressure range <sup>1</sup>	0-2 bar 0-4 bar 0-10 bar 0-30 psi 0-60 psi 0-100 psi
Max nominal pressure	2 bar 4 bar 10 bar 30 psi 60 psi 100 psi
Proof pressure <sup>1</sup>	3 * nominal
Burst pressure <sup>1</sup>	5 * nominal
Bridge resistance	6,2 kΩ typical / (5-7 kΩ)
Vout span	100 mV typical / (65-135mV)
Tmax <sup>2</sup>	185 Celsius
Accuracy <sup>3</sup>	0,25% @ FS
Signal amplification	None
Fluid	Dry air or inert gas

### Remark:

- All sensors are provided with a control sheet given pressure level versus mVolt @ 25C° under a supply voltage of 5 Volt.
- Accuracy of passive compensation 2%FS (passive compensation has to remain @ 25C°) (in option)
- Active compensation (nonstandard request - Highest accuracy but lowest acquisition frequency)

**1** | Absolute pressure

**2** | TMCL qualification tests - JEDEC JESD22-A104  
« temperature cycling » @ Tmax

**3** | Accuracy @25 Celsius

## CONTACT

**Operational Headquarter:** The Labs, Liège Science, Park Rue Bois Saint-Jean 15/1, B-4102 Seraing, BELGIUM

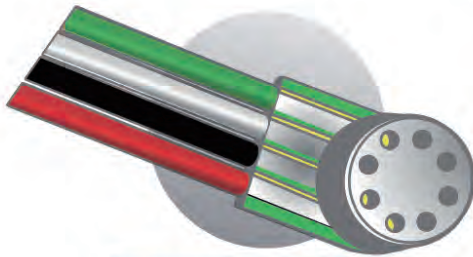
**TEL:** +32 4 353 30 14

**Email:** sales@sensorade.be

## Very small pressure sensor for harsh environment Standard Temperature - Flat

1,55 mm up to 100C°

MP-1.55-TIG-YYY-A-ST-FLAT



### MODEL DEFINITION

**TIG:** Inconel tube with grid is the standard product

**YYY:** pressure range in bar (002, 004, 010)

**A:** absolute pressure measurement

**ST:** standard temperature up to 100C°

**FLAT:** flat shape

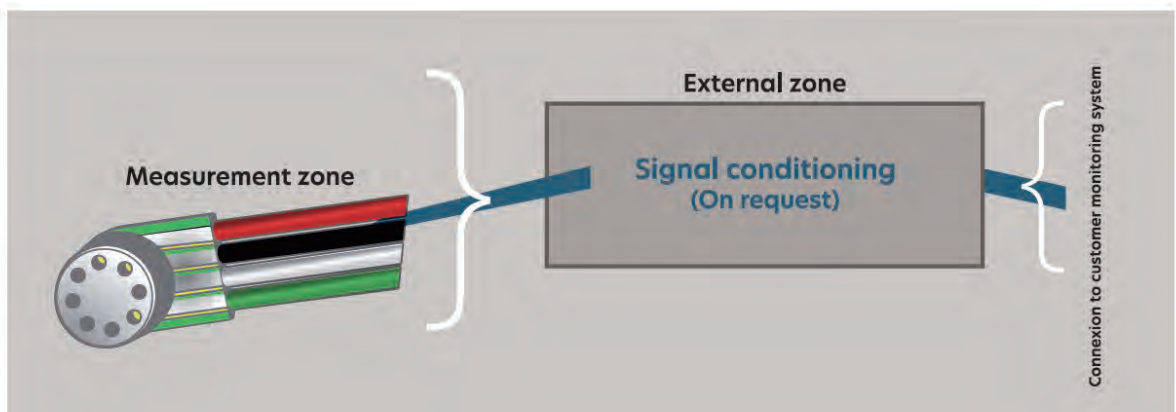
**Options:** special tube length, material and grid shape also available on request

### OVERVIEW

- L x W 1.55mm x 3mm
- From 2 to 10 Bar Absolute pressure sensor
- Burst pressure 10 bar
- Wide temperature range up to 100C°
- Harsh environment
- Customized solution possible
- mVolt output

### APPLICATIONS

- Instrumentation (ie: Automotive, ...)
- Aerodynamic testing (ie: wind tunnel)
- Industrial process monitoring
- Pumps
- Biomedical
- Oil and gas
- ...



## PART NUMBER

MP-1.55-TIG-YYY-A-ST-FLAT

L x W	1.55 mm × 3 mm
Pressure range <sup>1</sup>	0-2 bar   0-4 bar   0-10 bar 0-30 psi   0-60 psi   0-100 psi
Max nominal pressure	2 bar   4 bar   10 bar 30 psi   60 psi   100 psi
Proof pressure <sup>1</sup>	3 * nominal
Burst pressure <sup>1</sup>	5 * nominal
Bridge resistance	6,2 kΩ typical / (5-7 kΩ)
Vout span	100 mV typical / (65-135mV)
Tmax <sup>2</sup>	100 Celsius
Accuracy <sup>3</sup>	0,25% @ FS
Signal amplification	None
Fluid	Dry air or inert gas

### Remark:

- All sensors are provided with a control sheet given pressure level versus mVolt @ 25C° under a supply voltage of 5 Volt.
- Accuracy of passive compensation 2%FS (passive compensation has to remain @ 25C°) (in option)
- Active compensation (nonstandard request - Highest accuracy but lowest acquisition frequency)

- 1 | Absolute pressure
- 2 | TMCL qualification tests - JEDEC JESD22-A104  
« temperature cycling » @ Tmax
- 3 | Accuracy @ 25 Celsius

## CONTACT

**Operational Headquarter:** The Labs, Liège Science, Park Rue Bois Saint-Jean 15/1, B-4102 Seraing, BELGIUM

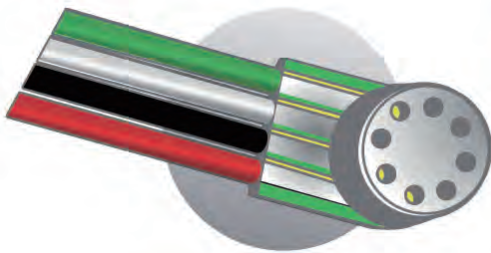
**TEL:** +32 4 353 30 14

**Email:** sales@sensorade.be

## Very small pressure sensor for harsh environment High Temperature - Flat

1,55 mm up to 185C°

MP-1.55-TIG-YYY-A-HT-FLAT



### MODEL DEFINITION

**TIG:** Inconel tube with grid is the standard product

**YYY:** pressure range in bar (002, 004, 010)

**A:** absolute pressure measurement

**HT:** high temperature up to 185C°

**FLAT:** flat shape

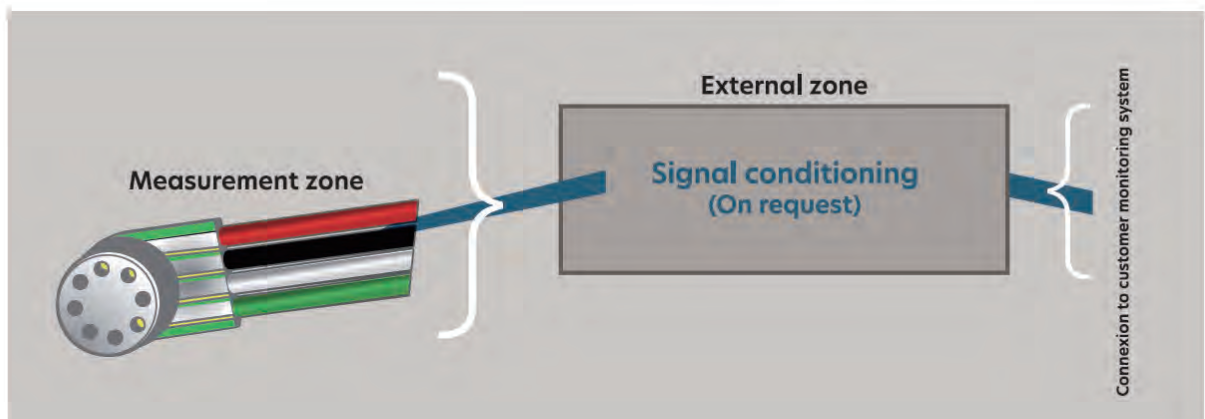
**Options:** special tube length, material and grid shape also available on request

### OVERVIEW

- L x W 1.55mm x 3mm
- From 2 to 10 Bar Absolute pressure sensor
- Burst pressure 10 bar
- Wide temperature range up to 185C°
- Harsh environment
- Customized solution possible
- mVolt output

### APPLICATIONS

- Instrumentation (ie: Automotive, ...)
- Aerodynamic testing (ie: wind tunnel)
- Industrial process monitoring
- Pumps
- Biomedical
- Oil and gas
- ...



## PART NUMBER

MP-1.55-TIG-YYY-A-HT-FLAT

L x W	1.55 mm x 3.00 mm
Pressure range <sup>1</sup>	0-2 bar 0-4 bar 0-10 bar 0-30 psi 0-60 psi 0-100 psi
Max nominal pressure	2 bar 4 bar 10 bar 30 psi 60 psi 100 psi
Proof pressure <sup>1</sup>	3 * nominal
Burst pressure <sup>1</sup>	5 * nominal
Bridge resistance	6,2 kΩ typical / (5-7 kΩ)
Vout span	100 mV typical / (65-135mV)
Tmax <sup>2</sup>	185 Celsius
Accuracy <sup>3</sup>	0,25% @ FS
Signal amplification	None
Fluid	Dry air or inert gas

### Remark:

- All sensors are provided with a control sheet given pressure level versus mVolt @ 25C° under a supply voltage of 5 Volt.
- Accuracy of passive compensation 2%FS (passive compensation has to remain @ 25C°) (in option)
- Active compensation (nonstandard request - Highest accuracy but lowest acquisition frequency)

**1** | Absolute pressure

**2** | TMCL qualification tests - JEDEC JESD22-A104  
« temperature cycling » @ Tmax

**3** | Accuracy @ 25 Celsius

## CONTACT

**Operational Headquarter:** The Labs, Liège Science, Park Rue Bois Saint-Jean 15/1, B-4102 Seraing, BELGIUM

**TEL:** +32 4 353 30 14

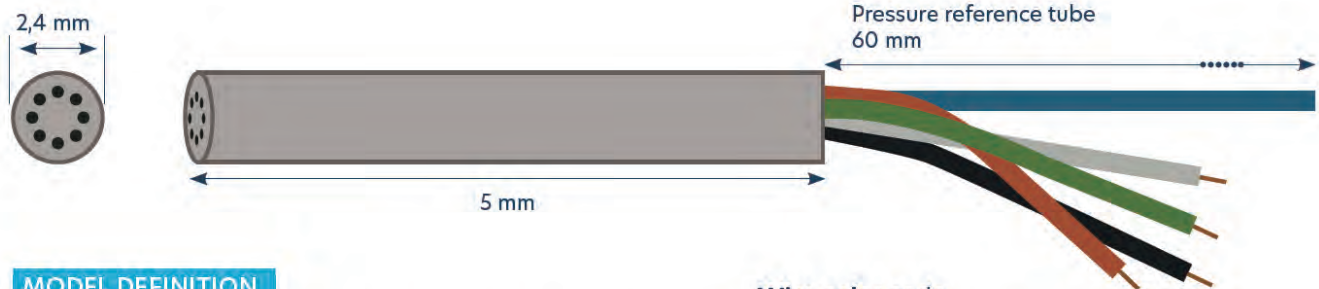
**Email:** sales@sensorade.be



## Miniaturised differential pressure sensor

2,4mm up to 100C°

MP-2.40-TIG-YYY-D-ST



### MODEL DEFINITION

**TIG:** Inconel tube with grid is the standard product  
**YYY:** pressure range in psig (005, 015, 030, 080, 150)  
**D:** differential pressure measurement  
**ST:** standard temperature up to 100C°  
**Options:** special tubes (sensor and reference) length, material and grid shape also available on request.

### Wire color code

Black	Input -
Red	Input +
White	Output -
Green	Output +

## FEATURES

- Reduced size : Ø 2,4 mm
- Integrated field shield
- Temperature range : up to 100°C
- Full scale range of 5 to 150 PSI
- Customized solution possible  
mVolt output

Ideal for dynamic pressure measurement



## APPLICATIONS

### MEDICAL

- Patient monitor
- Oxygen Concentrators
- Fluid Evacuation

### AEROSPACE

- Ideal for Wind Tunnel aerodynamic measurement

### INDUSTRIAL

- Industrial Controls
- Compressors & Pumps
- Oil-Filled Package

### AUTOMOTIVE

- Diesel Particulate Filter Exhaust Gas Recirculation Automotive Systems

**PART NUMBER**

MP-2.40-TIG-YYY-D-ST

Pressure Range	Proof Pressure	Burst Pressure
0 → 5 PSIG	25 PSI	40 PSI
0 → 15 PSIG	45 PSI	75 PSI
0 → 30 PSIG	90 PSI	150 PSI
0 → 80 PSIG	240 PSI	320 PSI
0 → 150 PSIG	300 PSI	450 PSI

Characteristic		Minimum	Typical	Maximum	Unit
Span	0 → 5 PSIG	60	90	120	mV/psi
	0 → 15 PSIG	55	80	105	
Zero Offset		-45	-10	25	mV
Bridge Resistance (RB)		4	5	6	kΩ
Pressure Hysteresis (d)		-	<±0,1	-	%/FS
Thermal Hysteresis (d,f)		-	<±0,2	-	%/FS
Operating Temperature		-		+100	°C
Max Excitation Voltage		-	-	10	V
TC Span		-0,24	-0,19	-0,155	%/°C
TC Zero Offset		-75	-	75	μV/°C
TC Resistance		0,24	0,275	0,33	%/°C
Linearity - Topside		-0,15	<±0,10	0,15	%/FS
Linearity - Backside	5 PSI	-0,3	<±0,2	0,3	%FS
	15, 30, 80, 150 PSI	-0,15	<±0,10	0,15	

## CONTACT

**Operational Headquarter:** The Labs, Liège Science Park Rue Bois Saint-Jean 15/1, B-4102 Seraing, BELGIUM

**TEL:** +32 4 353 30 14

**Email:** sales@sensorade.be